



SOLUTIONS FOR A SUSTAINABLE ENERGY FUTURE

Cutting Edge Design, German Engineering, World Quality

Power Generation



Energy Saving



E-Mobility



Power Management

EUROSOL is an international engineering company in renewable power generation with headquarters in Ludwigshafen, Germany and presence in the EMEA region.



Power Generation

- RES POWER STATIONS
- HYBRID ENERGY SOLUTIONS
- ENERGY STORAGE SYSTEMS

Energy Management

- ENERGY EFFICIENCY APPLICATIONS
- COMMERCIAL & RESIDENTIAL
- SMART METERING

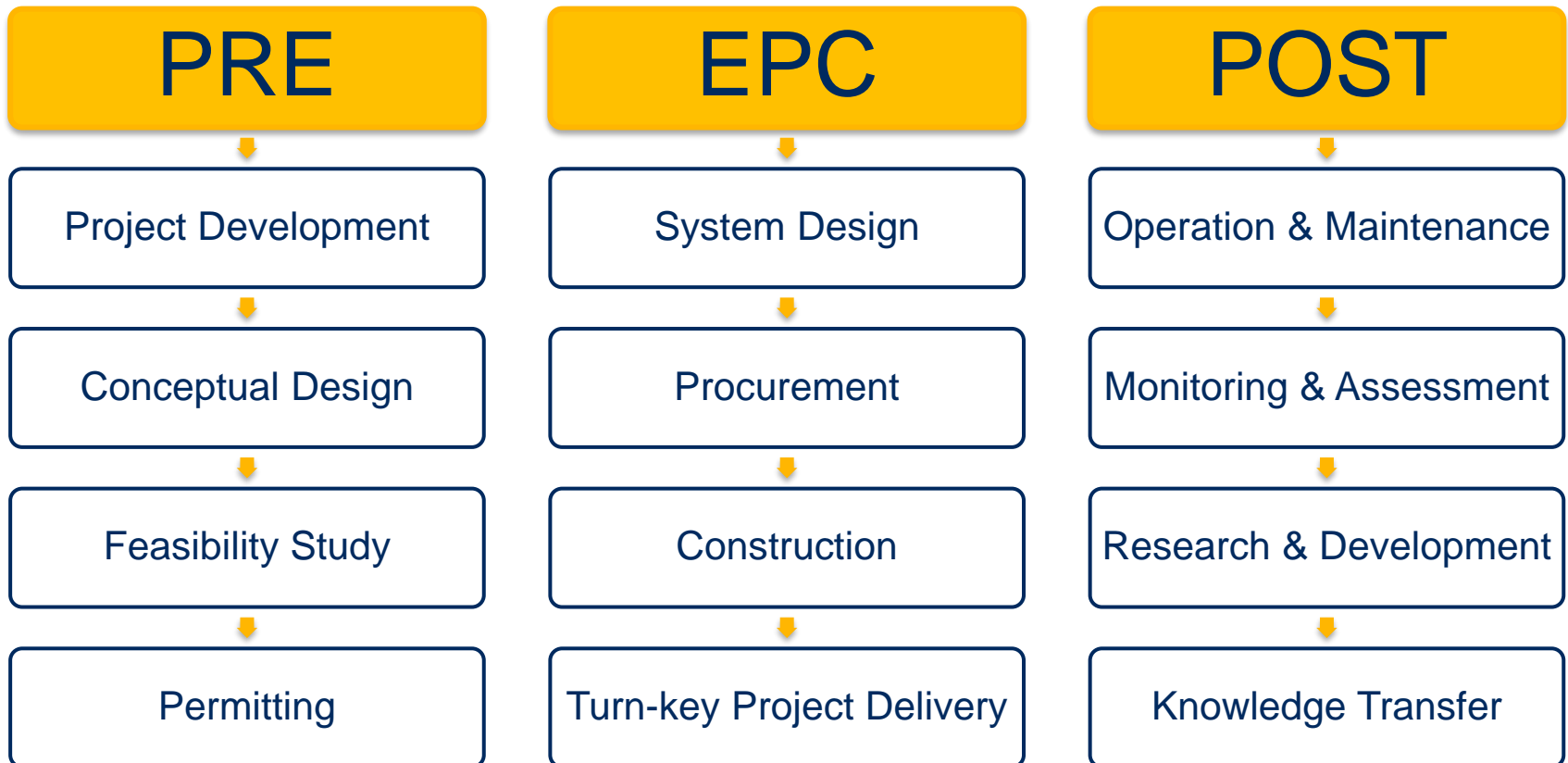
E-Mobility

- RES TO ELECTRIC MOBILITY
- CHARGING INFRASTRUCTURE
- E-VEHICLES

Power Management

- MICRO-GRID SOLUTIONS
- INDUSTRIAL & COMMERCIAL
- POWER QUALITY OPTIMIZATION





PV POWER PLANT JORDINA (JORDAN)

- Construction Year: 2015
- System Power: 1,5 MWp
- PV Modules: 5.770 x BYD 260P6C (260 Wp)
- Inverters: 49 x ABB TRIO 27.6-OUTD-S2x
- Mounting System: K2



HYBRID POWER GENERATION SYSTEM (SAUDI ARABIA)

Hybrid power system design, construction & commissioning

- Solar 68 kWp
- Energy Storage 231,84 kWh/C10
- Intelligent Energy Management System

Suppliers:

SMA, Solar World, Schletter, Braun, ABB, Schneider, Hoppecke



HYBRID POWER GENERATION SYSTEM (SAUDI ARABIA)

Hybrid power system design, construction & commissioning

- Solar 15,6 kWp
- Wind 6,5 kW
- Energy Storage 77,28 kWh/C10
- Intelligent Energy Management System

Suppliers:

SMA, CNPV, Schneider, Hoppecke, Braun



MOBILE SOLAR LIGHTING TOWERS (QATAR)

Mobile Solar LED Field Lighting Towers

- Solar 1 kWp
- Diesel Generator 3Ph 6kVA
- 6kVA Inverter/Charger
- Energy storage 8,64 kWh/C10
- 4 x 120W LED



347 KW ROOFTOP PV. WOQOOD STATION. QATAR



Technical Specifications

- **Location:** Doha, Qatar
- **Construction Year:** 2022
- **Capacity:** 347 kWp
- **Modules:** 762 Q Cells XL G9.3 455
- **Inverter types:** 4 X SMA STP15000TL-30, 2 X SMA STP20000TL-30, 2 X SMA STP110-60
- **Mounting system:** K2 Mini Rail

375 KW ROOFTOP PV. WOQOOD STATION. QATAR



Technical Specifications

- **Location:** Doha, Qatar
- **Construction Year:** 2022
- **Capacity:** 347 kWp
- **Modules:** 762 Q Cells XL G9.3 455
- **Inverter types:** 4 X SMA STP15000TL-30, 2 X SMA STP20000TL-30, 2 X SMA STP110-60
- **Mounting system:** K2 Mini Rail

120 KW CARPORT PV, NMOC, QATAR



Technical Specifications

- **Location:** Doha, Qatar
- **Construction Year:** 2022
- **Capacity:** 347 kWp
- **Modules:** 762 Q Cells XL G9.3 455
- **Inverter types:** 4 X SMA STP15000TL-30, 2 X SMA STP20000TL-30, 2 X SMA STP110-60
- **Mounting system:** K2 Mini Rail

PV POWER PLANT ISPARTA (TURKEY)

- Construction Year: 2016
- System Power: 4,72 MWp
- PV Modules: 18.492 x Phono Solar Poly 255 Wp
- Inverters: 134 x ABB PRO-33.0-TL-OUTD
- Mounting System: Schletter



PV POWER PLANT Mercedes Benz Hellas HQ (GREECE)

- System Power: 300 kWp
- PV Modules: 1.247 x Sharp ND-R240 (240 Wp)
- Inverters: 13 x Siemens Sinvert PVM 20
1 x Siemens Sinvert PVM 17
2 x Siemens Sinvert PVM 10
- Mounting System: REM Delta Wing



RES POWERED ELECTRIC VEHICLE CHARGING STATION Mercedes Benz Hellas HQ (GREECE)

Charging station design, construction and commissioning

- Solar 4,4kWp
- Indoor Cabinet BYD DESS
(Inverter, Charger, Batteries, Battery Management System)
- Energy Storage 8kWh

Suppliers:

BYD, REM, ABB, KEBA



PV POWER PLANT IKEA, Nicosia (CYPRUS)

- Construction Year: 2019
- System Power: 637 kWp
- PV Modules: 2315 x SHARP NDRJ275 (275 Wp)
- Inverters: 6 x ABB PVS100
- Mounting System: Renolit – Alkorsolar, Alumil



MICROGRID INTEGRATING MULTIPLE ENERGY SOURCES Mount Athos (GREECE)

- Micro-grid design
- Energy storage 362,88kWh/C10
- Intelligent management system

Suppliers:

SMA, Schletter, BYD, Enersys, ABB, Schneider



1.9 MWp Rooftop PV POWER PLANT Oinofyta, GREECE



Technical Specifications

- Location: Oinofyta, Greece
- Construction Year: Phase 1: 2022 + Phase 2: 2023
- Capacity: 1.9 MWp (1 MWp + 905 kWp)
- Modules: 2.247 Sharp NU-JD445 + 1.676 NU-JD540
- Inverter types: 8 X SG110CX + 6 X SG125X-P2
- Mounting system: K2 MultiRail + Alumil

KUWAIT – QNPC NEW PETROL STATIONS DESIGN 2019

Rooftop Solar PV Detailed Design

3 different types/sizes

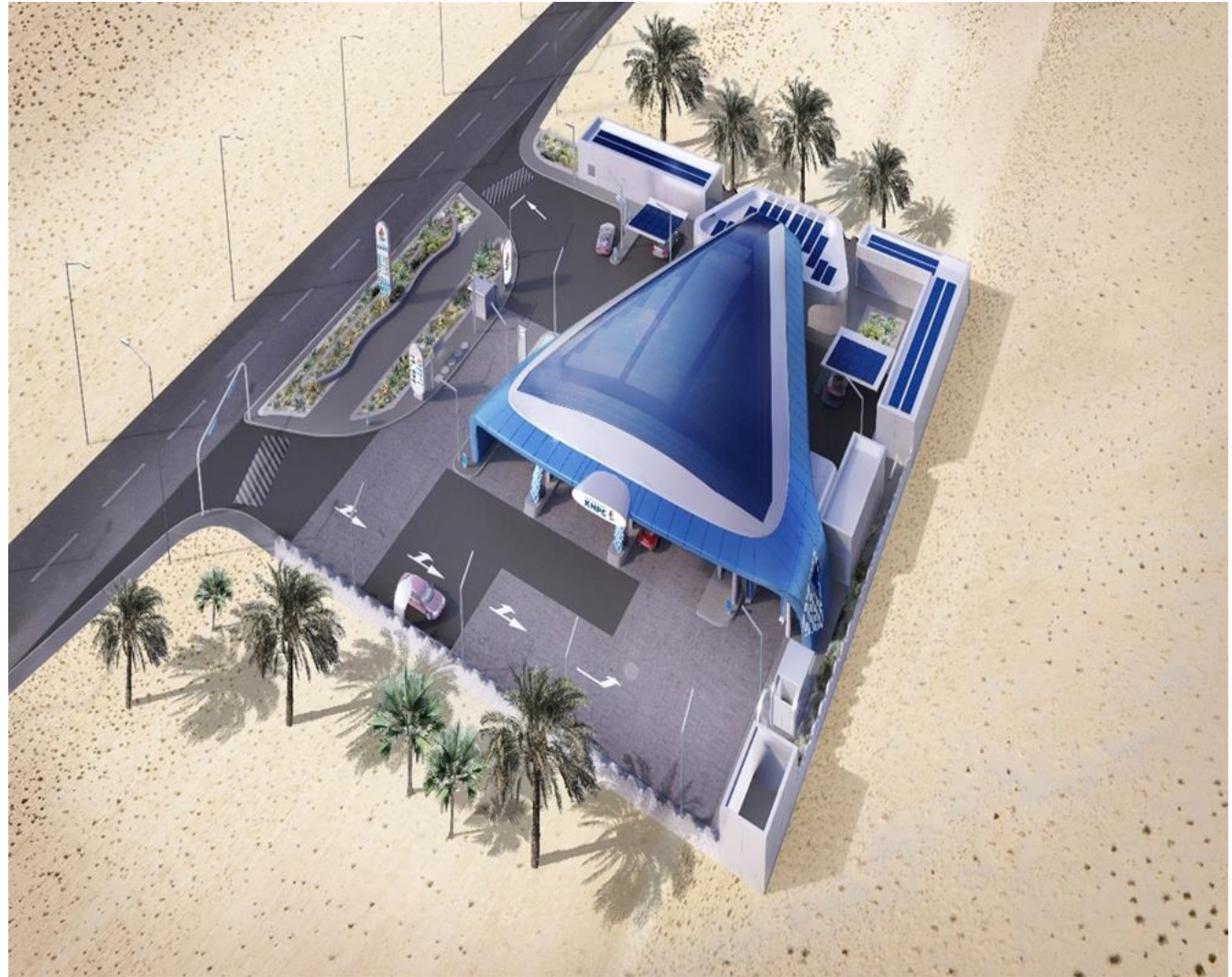
Total of 29 Stations



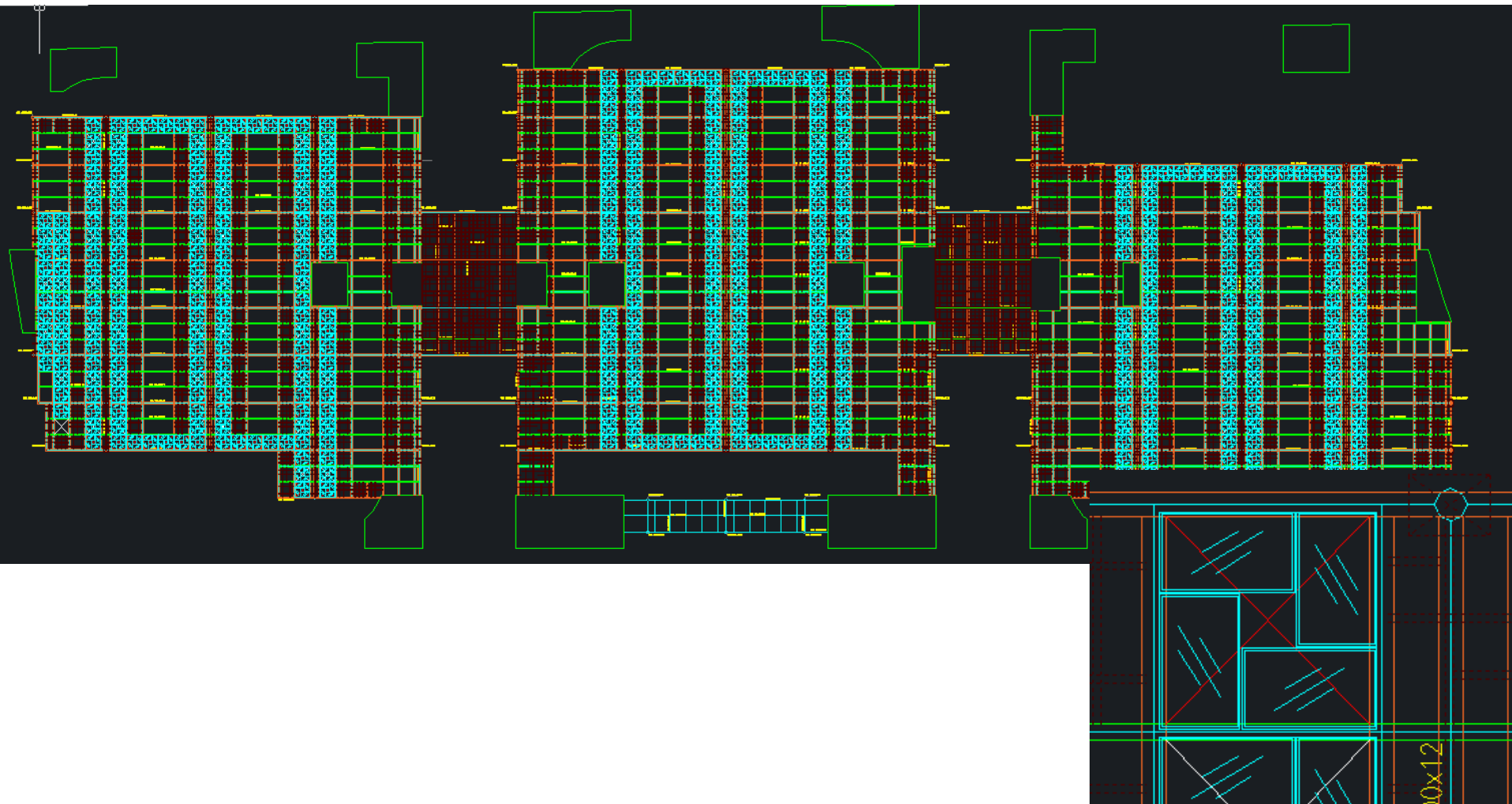
KUWAIT – QNPC NEW PETROL STATIONS DESIGN 2019

But...
Colors do not match
???

Well... !!!



KUWAIT – NEW MINISTRY OF FINANCE PARKING PV DETAILED DESIGN



H2020 PROJECT “TILOS”, TILOS ISLAND, GREECE

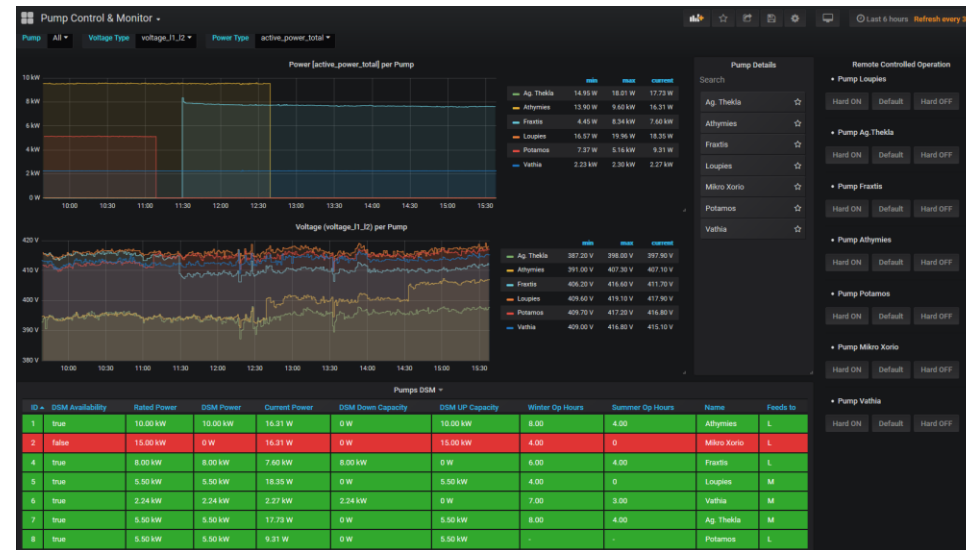
Smart Metering and Demand-Side Management

- 96 Residential/Commercial facilities
- 8 Community Water Pumping Stations
- Remote management and control of DSM loads
- Wireless Telecommunication Infrastructure
- End-user applications

High-Level Island Energy Management System

Monitors and manages in case of Grid Failure

- Hybrid Power Station (Wind:800kW, PV:150kWp, Battery 1MW/3.0MWh)
- Diesel Generator 1.6 MVA
- DSM Loads



EUROSOL – SHARP Partnership



EUROSOL acting as the EPC arm of Sharp in Middle East region.

VENTURING IN THE CLEAN ENERGY LANDSCAPE OF MIDDLE EAST

Cutting Edge Design,
German Engineering,
World Quality

EUROSOL ENERGY SOLUTIONS

KNOW-HOW
Sound engineering for grid connected and hybrid systems

EXPERIENCE
Diverse EPC track record in Europe and MENA region

PRESENCE
Established joint ventures and local partnerships

SHARP

VISION
Enable a more comfortable lifestyle on a global scale

MISSION
Create energy in an environmentally friendly way and use it wisely

THE MEANS
Ground-breaking solar solutions



THANK YOU